

SX-Biometrics Suite

Biometric Log On Solution

The screen of SX-Biometrics Suite during on authentication

An authentication by placing fingertip on the sensor allows users to achieve high security as well as to eliminate passwords and PIN administration. Fingerprint identifies individual user then user can log on to system. SX-Biometrics Suite supports file encryption. Controls the activation of applications.



Easy users' administration

Entering user information following wizard allows to add on new users up to 32 users. The users' privilege will display on screen.



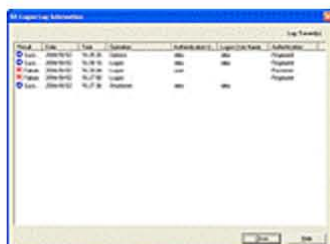
Multiple fingerprint registration

Up to 5 fingerprints can be enrolled.



Enrollment minutiae data

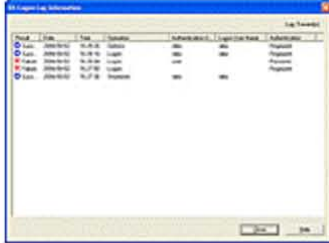
The quality of processed minutiae data is translated into percentage that represents a level of quality visually. It helps to acquire high quality minutiae data.



Administration of log information

Up to 100days or 5,000 data of log information (log on, screen saver unlock and administration etc.) is stored on system.

SX-Biometrics Suite



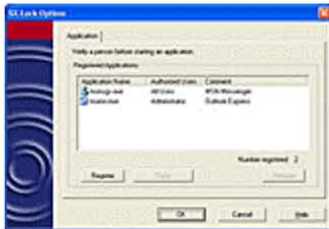
Replace ID and password with a fingerprint

SX-Pass can register ID and password for WEB pages and applications (Max. 100 registrations). When a registered page is displayed, the fingerprint authentication screen appears automatically. The user can log on to the WEB page or start an application just by putting their finger on the sensor. User IDs and passwords are not necessary.



Control the activation of applications

When an application is registered to SX-Lock, only registered users of SX-Biometrics Suite can start the application. SX-Lock can also be configured to allow only an administrator of SX-Biometrics Suite to start the application.



File encryption and decryption protect your information.

Important information often needs to be saved and managed securely. SX-Lock can easily encrypt and decrypt files and folders from the menu displayed by a right mouse click. SX-Lock can also specify the users since it requires fingerprint authentication for decryption.

Features

Log on to a Windows based PC

User is free to log on to Windows from entering a legend "user name" and "password" by fingerprint authentication. User is identified by fingerprint authentication just putting a finger on the sensor. SX-Biometrics Suite for MUSB200-COMBO verifies a minutiae data resides on a IC card with an enrolled fingerprint data.

Adapt to the Windows domain

User selects to log on to either local or domain on Windows.

Minutiae matching

High quality of matching software achieves False Rejection Rate (FRR) of 0.1% and False Acceptance Rate (FAR) of 0.001%. Minutiae data is only used for matching thus privacy is secured.

Screen saver lock

Fingerprint authentication is to unlock screen saver. Double-click on the -Logon icon on the menu bar boots screen saver. Detach IC card from the MUSB200-COMBO also boots screen saver.

SX-Biometrics Suite

SX-Pass - Replace passwords with fingerprint authentication

Passwords used to activate applications or for members only web pages can be replaced using fingerprint authentication. It is not necessary to remember multiple and often unique user IDs and passwords to gain entry to secured information. SX-Pass also ensures that only you access the application and WEB pages requiring user IDs and passwords. SX-Pass prevents unauthorized access.

SX-Lock - File encryption, decryption, and application lock

File encryption prevents accidental or corrupt information leakage. SX-Lock is designed for secure file management by specifying users forcing fingerprint authentication for file decryption. The activation of applications can also be controlled by fingerprint authentication. The administrator of SX-Biometrics Suite ensures the management and activation control of important applications.

Technical Specifications

Technical Specification	SX-Biometrics Suite	SX-Biometrics Suite COMBO
Method of authentication	Minutiae matching	
Accuracy of authentication	FRR = 0.1%, FAR = 0.001%(Variable from low, middle and high)	
Number of users per PC	Max. 32 users	Max. 300 users
Number of fingerprints enrolled	Max. 5 fingerprints per user	
Minutiae data resides	Hard disk	IC card
Software Support	Windows 2000, XP	Windows 2000, XP
Fingerprint reader	FIC-200, FUS-200N	MUSB200-COMBO